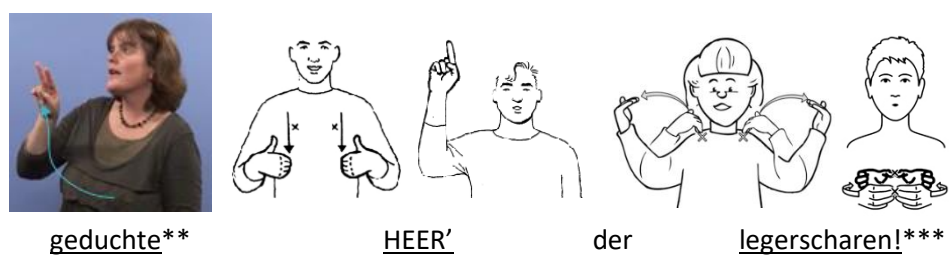
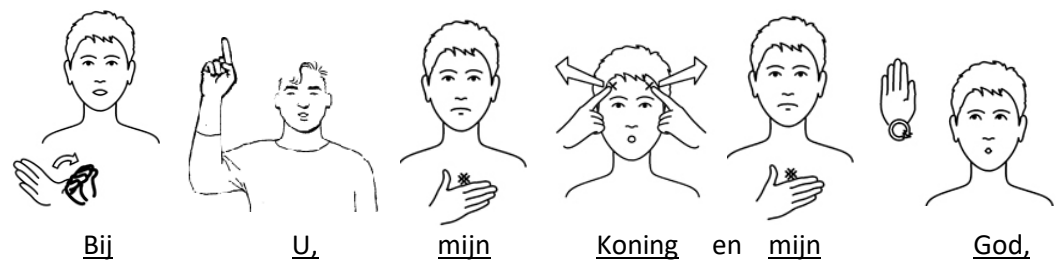
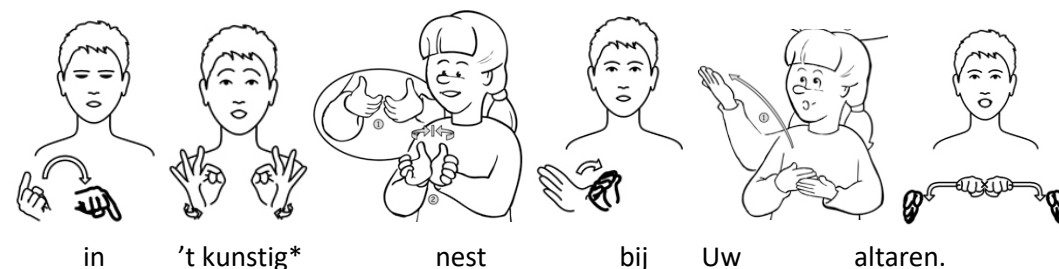
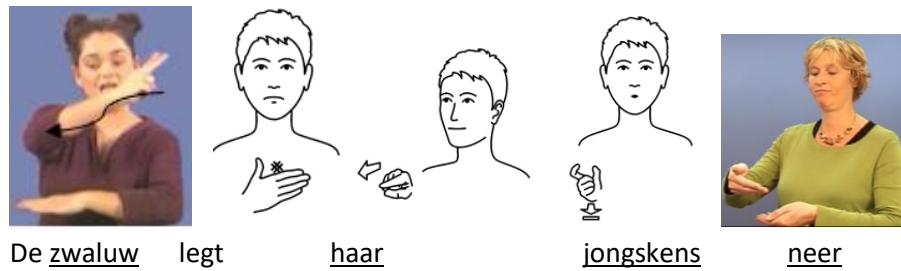
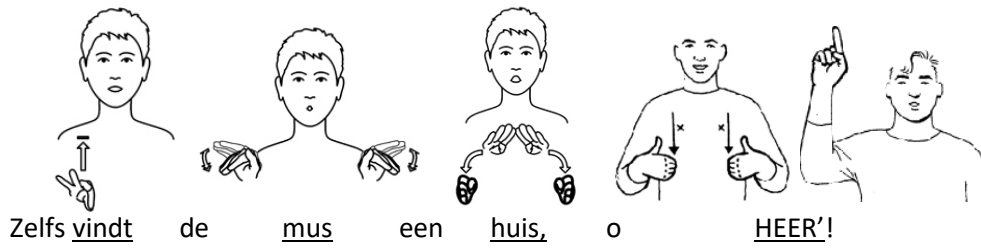


**Psalm 84:2**





Welzalg



hij,



die

bij



U



woont,



gestaâg



U



prijst

en



eerbied toont.

*Toelichting:*

*\*'kunstig': gebaar 'prachtig'*

*\*\*'geduchte': gebaar 'ontzag'*

*\*\*\*'legerscharen': gebaren 'engel' en 'groep'*